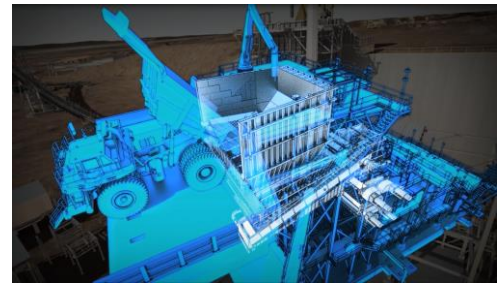




Marandoo Mine Phase 2 Project



Client Rio Tinto
CAPEX A\$1.1 billion

Location Pilbara, Western Australia
Project Duration 2011 - 2013

PROJECT NARRATIVE

The Marandoo mine is an iron ore processing facility located in the Western Australian Pilbara region. The second phase of the project involved the modifications and additions to the existing processing plant in order to process below water table ore.

SCOPE OF WORK

PDC's scope included Shop detailing and 3D BIM Modelling of Structural Steel, Mechanical plate work and piping. Scope covered structural steel work, bins, hoppers, conveyors, transfer stations and all other fabricated items required for the Process plant.

PROJECT CHALLENGES / HIGHLIGHTS

- Assisting in best use of design adoptive works models – MMP2 design was adopted in part from Hope Downs 4. PDC produced models were critical for the best interface of old and new design including clash detection.
- PDC and Lycopodium group worked as a team to resolve problems continuously, from schedule delays of design, changes to protocols, re-design and construction requirements.